

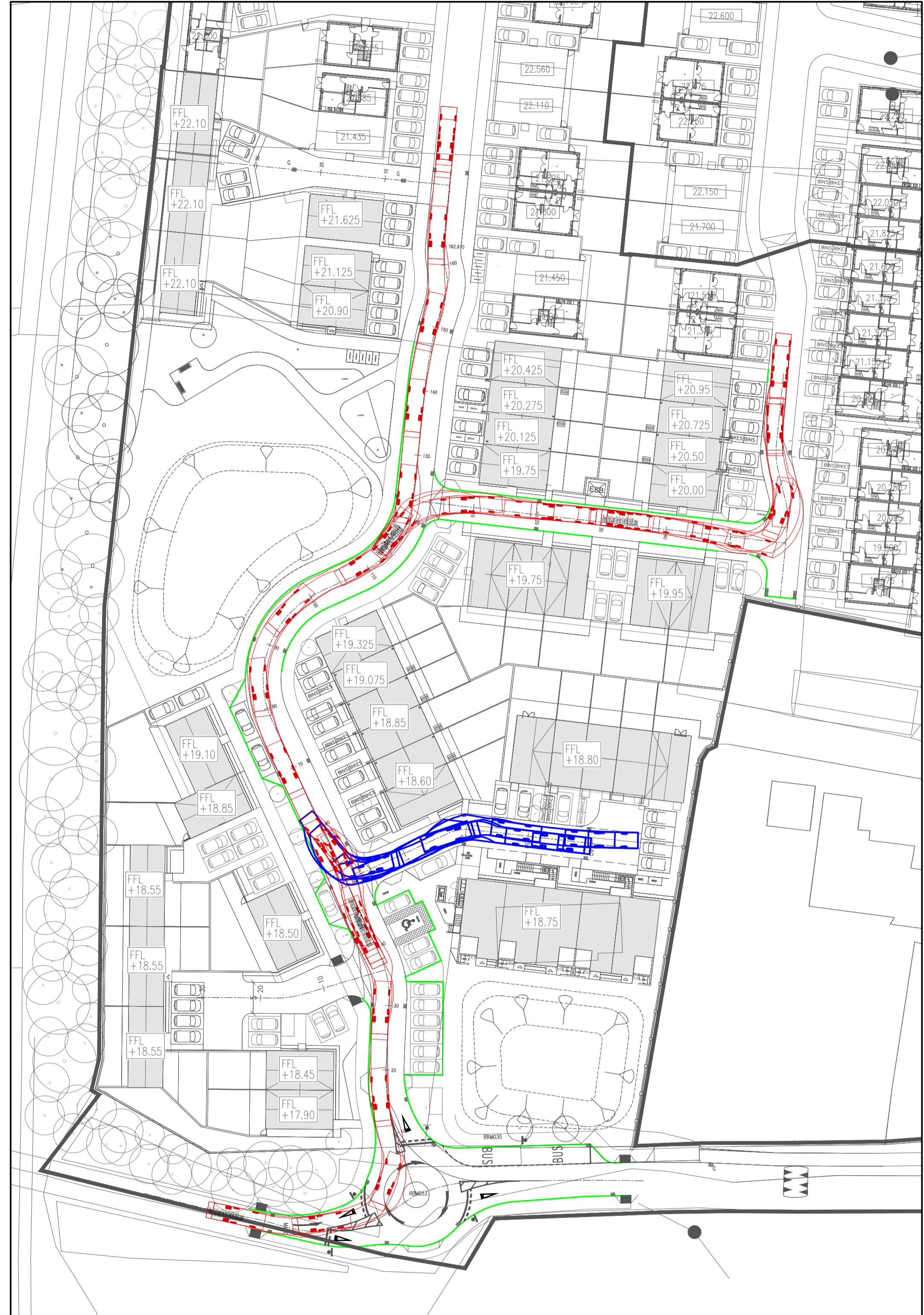
This drawing should not be scaled. Dimensions to be verified on site.  
Any discrepancies should be referred to the Engineer prior to work being put in hand.  
This drawing is the property of Waterman Moylan Consulting Engineers Limited and is issued on the condition that it is not copied, reproduced, retained or disclosed to any unauthorized person, either wholly or in part without the consent in writing of Waterman Moylan Consulting Engineers Limited.  
Block S, East Point Business Park, Dublin, D03 H3F4, Ireland t+353 1 664 8900

- NOTES:
- DO NOT SCALE. USE FIGURED DIMENSIONS ONLY.
  - THIS DRAWING IS TO BE READ IN CONJUNCTION WITH ALL OTHER RELEVANT ARCHITECTURAL AND ENGINEERING DRAWINGS.

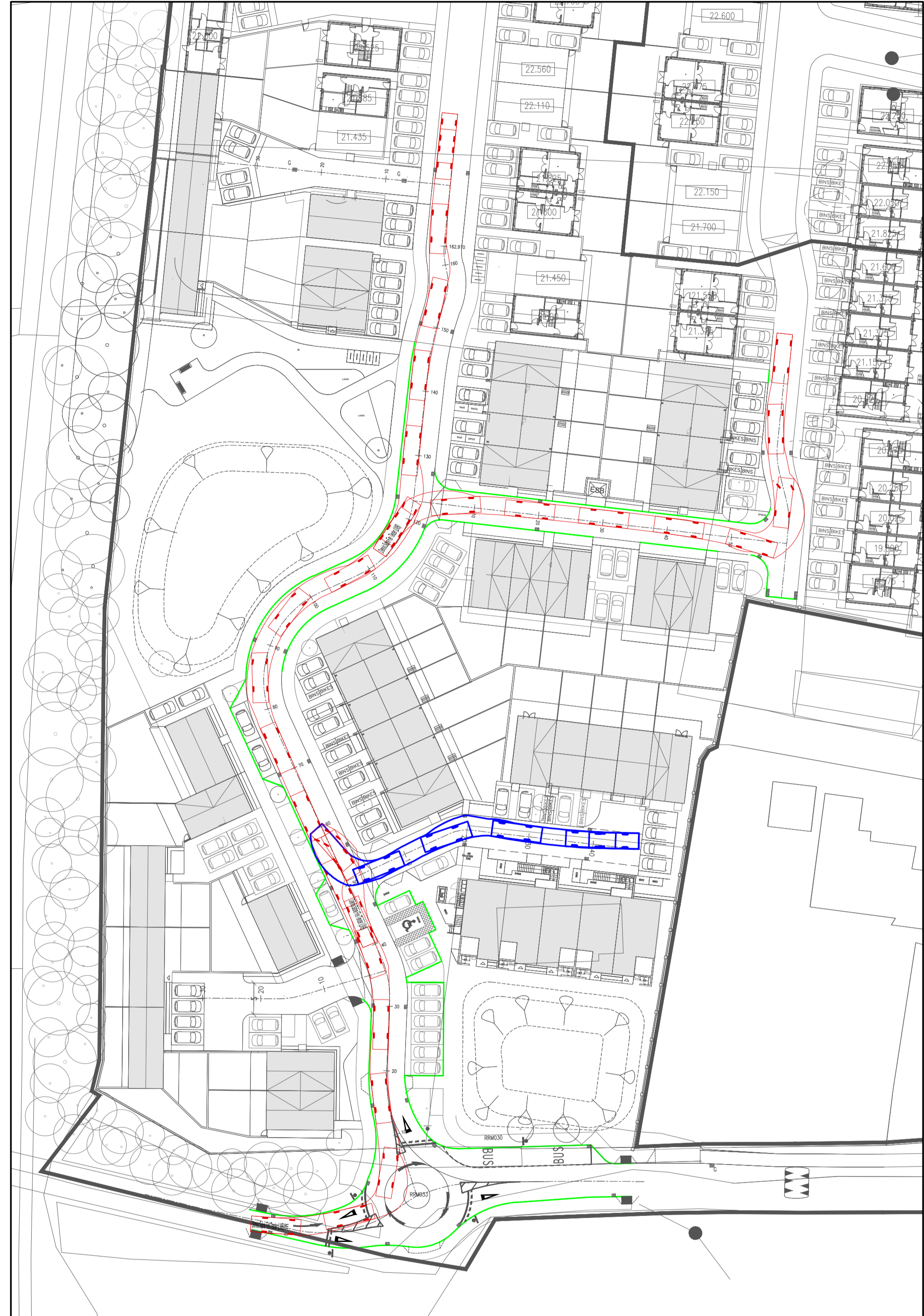
**LEGEND:**

	Phoenix 2 High Capacity Twin Pack 15 (with Elite 2 6x2M chassis) Refuse Vehicle	9.040m 2.430m 3.500m 0.410m 2.500m 11.000m 7.800m
	Dennis Sabre Fire Tender (LWB)	7.700m 2.430m 3.517m 0.391m 2.350m 5.000m 7.400m

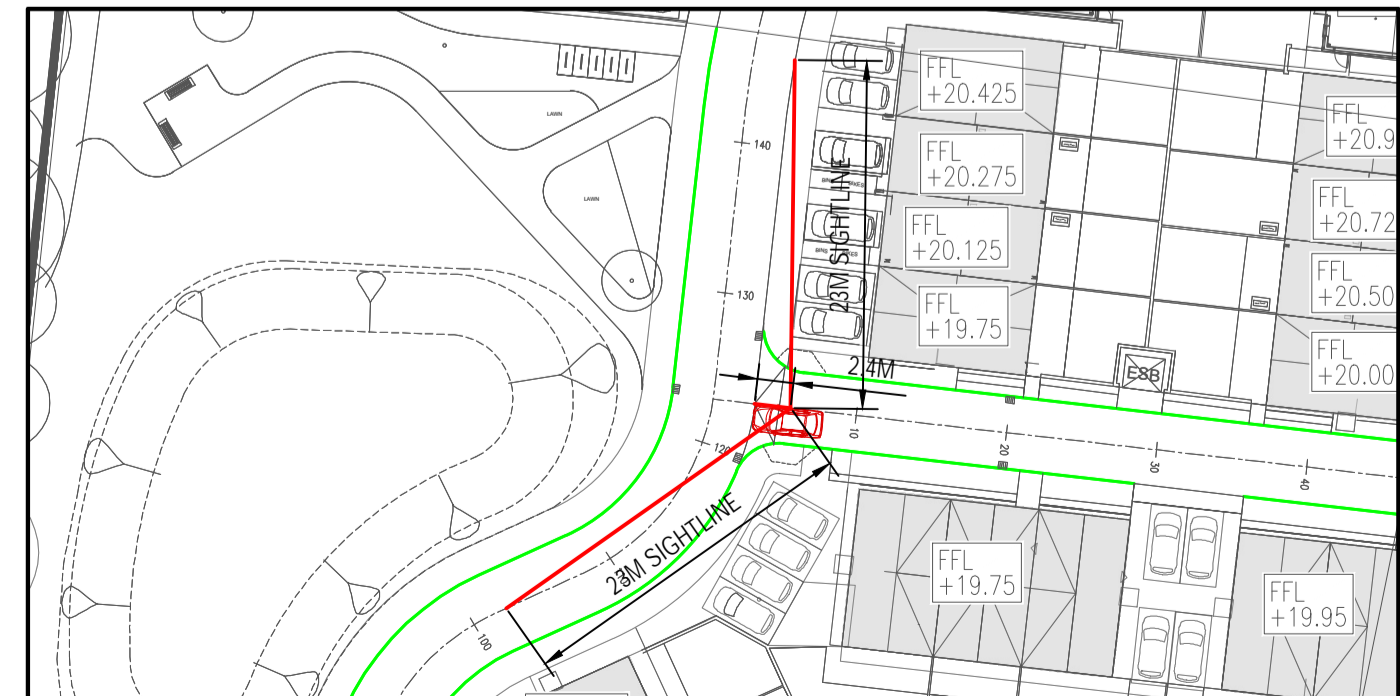
Note: Forward Swept Path Analysis Shown in **Red**  
Reverse Swept Path in **Blue**.  
Proposed 125mm High Kerb in **Green**.



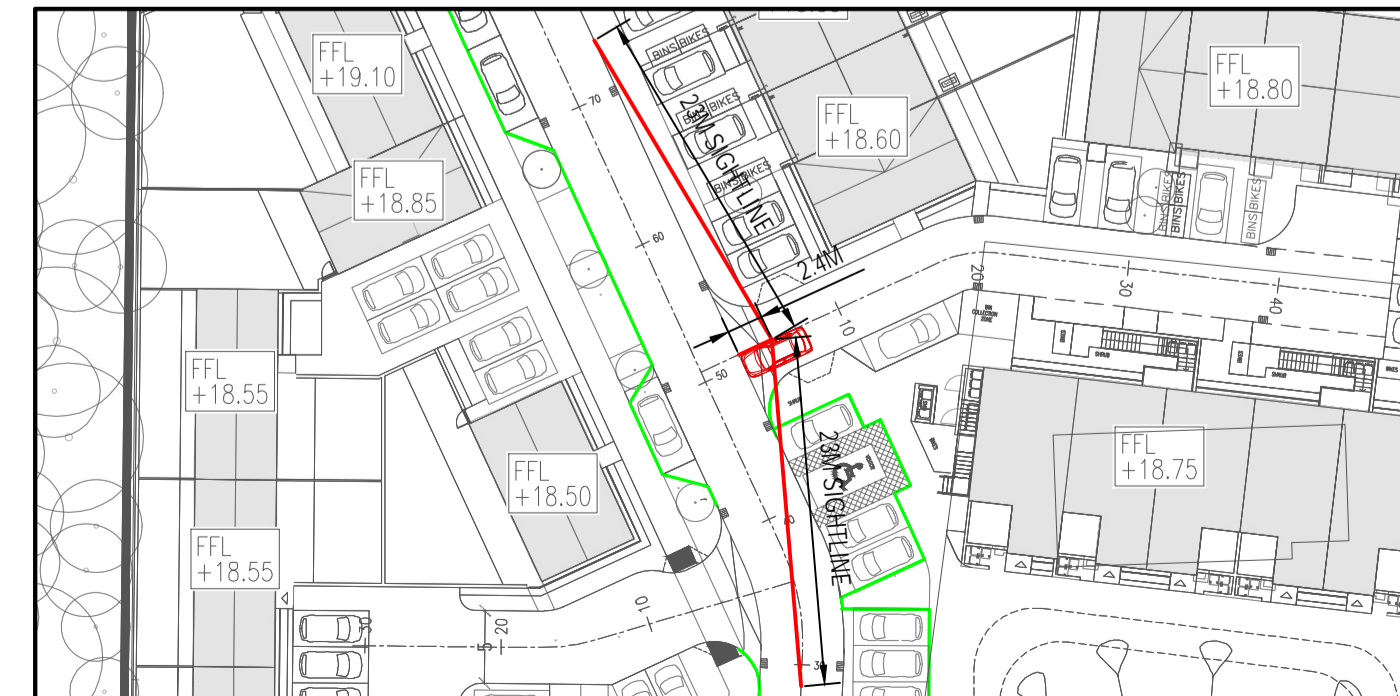
**REFUSE VEHICLE TURNING MOVEMENTS**  
SCALE 1:500



**FIRE TENDER TURNING MOVEMENTS**  
SCALE 1:500



**JUNCTION 1 ENTRANCE SIGHTLINES**  
SCALE 1:500



**JUNCTION 2 ENTRANCE SIGHTLINES**  
SCALE 1:500



**KEYPLAN**  
SCALE 1:1000

Rev	Date	Description	By	CHK
Amendments				

Project  
**PROPOSED RESIDENTIAL DEVELOPMENT AT OLD SLANE ROAD, DROGHEDA CO. LOUTH**

Title  
**SWEPT PATH ANALYSIS AND SIGHTLINES**

Client  
LAGAN HOMES TULLYALEN LTD.



BLOCK S, EASTPOINT BUSINESS PARK, ALFIE BYRNE ROAD, DUBLIN D03 H3F4 IRELAND. Tel: (01) 664 8900  
Email: info@waterman-moylan.ie www.waterman-moylan.ie

Status			
PLANNING			
Designed By	NS	Approved	MD
Waterman Ref	23-067		
Drawn By	NS	Date	AUGUST 2025
Scales @ A1	1:500		
Project	Originator	Volume	Level
Role	Type	Number	Revision
OSR-WMC-PH3-00-DR-C-4130			

